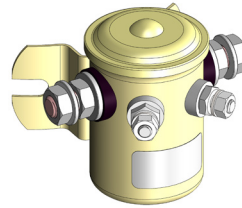


New contactors

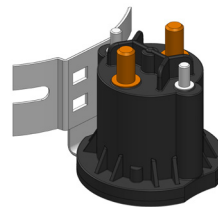
We hereby inform you that we have introduced a new contactor that replaces the current model.

WAS:

14917000028 TLR.TIPO EXTRA C.C.12V + FASCETTA
14917000046 TLR.TIPO EXTRA C.C.24V + FASCETTA

**BECOMES:**

14917000135 KIT. TELER. 80A BLACK 24V+LMN.+CVO
14917000199 KIT TELER. 80A BLACK 12V+LMN.+CVO

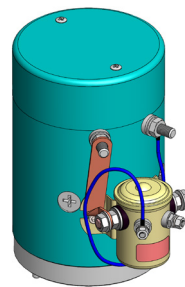


The new contactors are supplied complete with copper lamellae to allow full interchangeability with the previous ones.

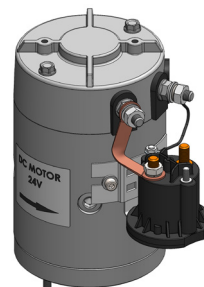
It follows that even the codes of electric motors complete with contactor will undergo the following variation:

WAS:

14916500061 MTR.12V DC D.110 2.0KW TLR.80A *BLU
14916500089 MTR.24V DC D.110 3.0KW TLR.80A *BLU

**BECOMES:**

14916500723 MTR.12V DC D.110 2.0KW TLR.80A *ARG
14916500730 MTR.24V DC D.110 3.0KW TLR.80A *ARG



The new products are fully interchangeable with the previous version.
Our technical sales department is available for any further information.